

# Activity Analysis



10.06.2014

Group nr 2 Asia Jankowska, Daniels Fedoreks, Paulius Macys  
Ahsanullah Hafizi

## Table of contents:

<b>1. Table of contents</b> .....	1-2
<b>2. Scheme Design Proposal</b> .....	3
Group contract .....	4
Planning .....	5
Sketches .....	6
Functional analysis .....	7
Brick measurements .....	8
Revit .....	9
U- value .....	10
Dead Load .....	11
Technical Installations .....	12
Detail Drawing .....	13
Isometric Drawings .....	14
Shaft Drawing .....	15
Building Component Journal .....	16
Room Schedule .....	17
Quality Assurance .....	18
Price Estimation .....	19
Presentation.....	20
<b>2.DD1</b> .....	21
Group contract .....	22
Business .....	23
Building site assignment .....	24
Precedence diagram .....	25
Cad manual .....	26
Drainage Calculation.....	27
Drainage Plan.....	28
Energy frame.....	29
Energy report.....	30
Tender time schedule .....	31
Wet rooms .....	32



Fire Plans .....	33
Static report .....	34
Technical Installations .....	35
Building Component Journal.....	36
Revit .....	37
Detail in Revit .....	38
Price Estimation .....	39
Quality assurance .....	40
Presentation.....	41

# SCHEME DESIGN PROPOSAL

05.02.2014-31.03.2014

Data sheet for activity analysis

<b>Phase description:</b>	BPM
<b>Date when analysis is done:</b>	17.02.2014
<b>Participants initials for the in the analysis</b>	AJ,PM,EH,PM

No	Activity name:	Reciever.	CLIENT
1	Group contract	<b>Duration</b>	1h
		<b>Act. work</b>	3h

### Illustration of the expected objective with activity.

Group contract

The group contract consists of work in group & in the project per se. Both the work done in the school period and the project time must be completed on time and with quality. If any group member faces problems with this, please contact the teacher. The other members of the group are responsible for the situation and for the solution, without any delay.

**Group objectives:**

1. All responsible and from the work we agree to each other.
2. If an individual is not going to school or will be late more than three times to talk about it to the rest of the group.
3. If we have any problem with something we should ask each other before the teacher.
4. Complaints should be handled in school.
5. We have after lesson all our finished of tasks for the day.
6. Every day should be all of our finished of tasks for the rest of group, in case of leaving for a week.
7. All conflicts should be dealt with as fast as possible.
8. If a group member's changes with the change of something, we agree to change it on at least 2 of us to be it.
9. If we have any problem or something we don't like we talk it over in a group and have to be resolved.
10. If someone doesn't appear at school or doesn't do their responsibility consistently, we discuss whether further should be agreed from the group after careful thinking.
11. If needed work can be delegated, so an individual can work from home.
12. Spend money wisely.

**Group members:**

Asia Ahsan  
Phone: 123456789  
asia.ahsan@businessacademy.dk

**Paulius Daniels**  
Phone: 987654321  
paulius.daniels@businessacademy.dk

**DF**  
Phone: 555555555  
df@businessacademy.dk

**DF**  
Phone: 111111111  
df@businessacademy.dk

**DF**  
Phone: 222222222  
df@businessacademy.dk

### Purpose with this activity:

We did group contract to have some rules. That will help us with work in group: Finish our tasks on time. Come to school every day. Stay after lesson until we finish the task for the day.

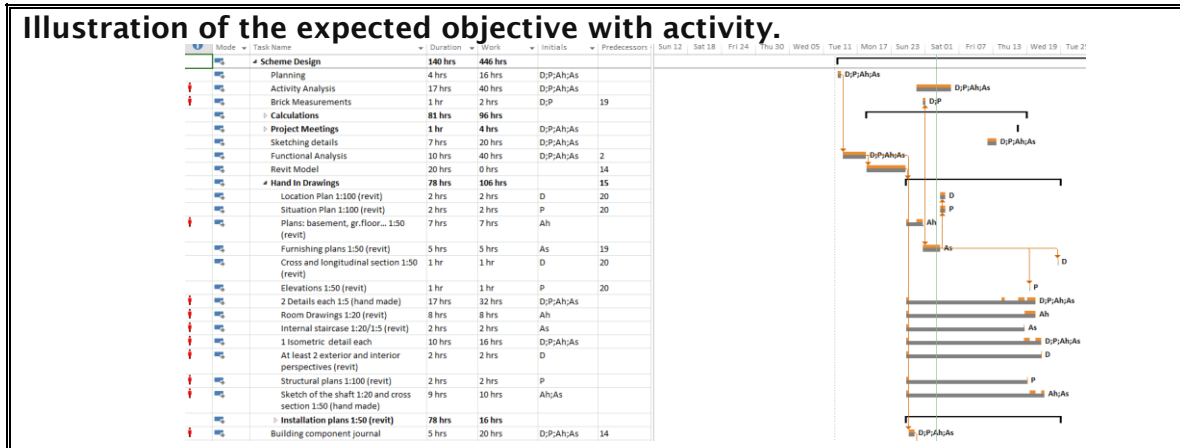
Documents conten/Notes:	Executed	Respons
Email Adress	AJ,AH,DF,PM	AJ,AH,DF,PM
Phone number	AJ,AH,DF,PM	AJ,AH,DF,PM
Signatures	AJ,AH,DF,PM	AJ,AH,DF,PM
Rules and regulation	AJ,AH,DF,PM	AJ,AH,DF,PM
Names of the members	Asia	Ahsan
	Paulius	Daniels
Documentations type:	Executed	Respons
Report	AJ,AH,PM,DF	AJ,AH,DF,PM
Necessary tools:	Executed.	Respons
Word	AJ,AH,PM,DF	AJ,AH,DF,PM

Comments from the project -logbook	Executed	Respons
Our group contract took more time because in 2nd week of project we had a new group member.		

## Data sheet for activity analysis

<b>Phase description:</b>	BPM
<b>Date when analysis is done:</b>	27.03.2014
<b>Participants initials for the in the analysis</b>	AJ,PM,EH,PM

<b>No</b>	<b>Activity name:</b>	<b>Receiver.</b>	<b>CLIENT</b>
2	Planning	<b>Duration</b>	2h
		<b>Act. work</b>	6h



**Purpose with this activity:**  
We did it, to plan the task during the whole project. We put all of our tasks and added time, then we know how much time do we need for the individual tasks. It helps us to arrange our time.

<b>Documents conten/Notes:</b>	<b>Executed</b>	<b>Respons</b>
Tasks	DF	AJ,AH,DF,PM
Name of the group members	DF	AJ,AH,DF,PM
Time	DF	AJ,AH,DF,PM
Calendar	DF	AJ,AH,DF,PM
<b>Documentations type:</b>	<b>Executed</b>	<b>Respons</b>
Analysis	DF	DF
<b>Necessary tools:</b>	<b>Executed.</b>	<b>Respons</b>
MS Word	DF	DF

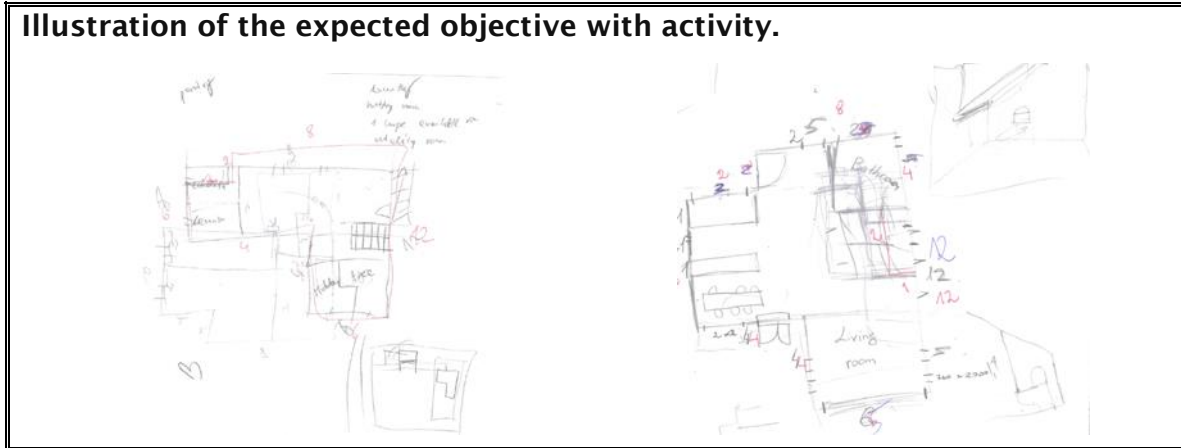
<b>Comments from the project -logbook</b>	<b>Executed</b>	<b>Respons</b>

## Data sheet for activity analysis

<b>Phase description:</b>	BPM
<b>Date when analysis is done:</b>	10.02.2013
<b>Participants initials for the in the analysis</b>	AJ,PM,EH,PM

<b>No</b>	<b>Activity name:</b>	<b>Reciever.</b>	<b>CLIENT</b>
3	Sketches	<b>Duration</b>	3h
		<b>Act. work</b>	7h

**Illustration of the expected objective with activity.**



**Purpose with this activity:**

On the beginning of our work we started with sketches. All of us had a different ideas about how our house should look like. We combine this ideas into one, really good project. Sketches are for showing our idea - it is the type of sharing our knowledge.

<b>Documents conten/Notes:</b>	<b>Executed</b>	<b>Respons</b>
Ideas	AJ,AH,PM,DF	AJ,AH,PM,DF
Building Regulations	AJ,AH,PM,DF	AJ,AH,PM,DF
Brief from Client	AJ,AH,PM,DF	AJ,AH,PM,DF
<b>Documentations type:</b>	<b>Executed</b>	<b>Respons</b>
Drawings	AJ,AH,PM,DF	AJ,AH,PM,DF
<b>Necessary tools:</b>	<b>Executed.</b>	<b>Respons</b>
Paper,pencil	AJ,AH,PM,DF	AJ,AH,PM,DF




<b>Comments from the project -logbook</b>	<b>Executed</b>	<b>Respons.</b>

**Data sheet for activity analysis**

<b>Phase description:</b>	BPM
<b>Date when analysis is done:</b>	3.03.2014
<b>Participants initials for the in the analysis</b>	AJ,PM,EH,DF

<b>No</b>	<b>Activity name:</b>	<b>Reciever.</b>	<b>CLIENT</b>
4	Functional Analysis	<b>Duration</b>	3h
		<b>Act. work</b>	6h

**Illustration of the expected objective with activity.**

	Functional analysis for roof								
	Roof Tiles			Slates			Roofing felt		
									
	F	I	M	F	I	M	F	I	M
Water tight	10	3	30	10	3	30	7	2	14
Moisture	9	3	27	10	3	30	7	2	14
Sustainability	6	3	18	7	3	21	4	2	8
Heat resist	8	3	24	10	3	30	3	1	3
Price	5	2	10	6	2	12	2	3	6
Aesthetics	9	3	27	8	3	24	1	1	1
Fire resist	10	3	30	10	3	30	3	2	6
Durability	7	3	21	9	2	18	4	2	8
			187			195			60

**Purpose with this activity:**

We did this analyse to choose the materials for wall,floor,roof etc. It is the easiest way to discuss something, because it is the kind of "vote". Everyone said something about each of the type and we just calculate our points and choose the best choice.

<b>Documents conten/Notes:</b>	<b>Executed</b>	<b>Respons</b>
Category	PM,AH,AJ,DF	PM,AH,AJ ,DF
Different materials	PM,AH,AJ ,DF	PM,AH,AJ ,DF
Knowledge	PM,AH,AJ ,DF	PM,AH,AJ, DF
<b>Documentations type:</b>	<b>Executed</b>	<b>Respons</b>
Analysis	PM	PM,AH,AJ DF
<b>Necessary tools:</b>	<b>Executed.</b>	<b>Respons</b>
Excel	PM	PM,AH,AJ

<b>Comments from the project -logbook</b>	<b>Executed</b>	<b>Respons.</b>

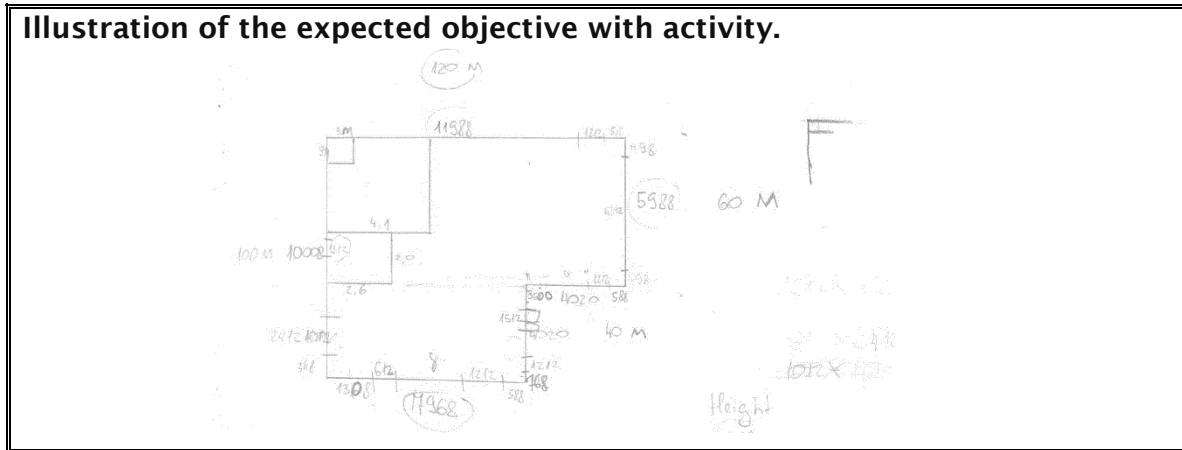
Data sheet for activity analysis



<b>Phase description:</b>	BPM
<b>Date when analysis is done:</b>	5.03.2014
<b>Participants initials for the in the analysis</b>	DF

<b>No</b>	<b>Activity name:</b>	<b>Reciever.</b>	<b>CLIENT</b>
5	Brick Measurments	<b>Duration</b>	1h
		<b>Act. work</b>	3h

**Illustration of the expected objective with activity.**



**Purpose with this activity:**

We did it to calculate bricks in our house, so that all the openings can be fit and placed without any problems.

<b>Documents conten/Notes:</b>	<b>Executed</b>	<b>Respons</b>
Ready house	DF	DF,PM
Table	DF	DF,PM
<b>Documentations type:</b>	<b>Executed</b>	<b>Respons</b>
Calculation	DF	DF
<b>Necessary tools:</b>	<b>Executed.</b>	<b>Respons</b>
Paper,pen,	DF	DF

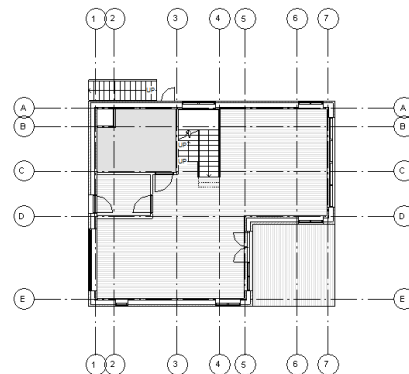
<b>Comments from the project -logbook</b>	<b>Executed</b>	<b>Respons.</b>

Data sheet for activity analysis

<b>Phase description:</b>	BPM
<b>Date when analysis is done:</b>	6.03.2014
<b>Participants initials for the in the analysis</b>	DF

<b>No</b>	<b>Activity name:</b>	<b>Reciever.</b>	CLIENT
6	Revit	<b>Duration</b>	10h
		<b>Act. work</b>	40h

**Illustration of the expected objective with activity.**



**Purpose with this activity:**

We transfered our sketches to Revit. This program help us to find any mistakes in our house. It looks really real, so we always can see if it is ok. It helps us to show house to client.

<b>Documents conten/Notes:</b>	<b>Executed</b>	<b>Respons</b>
Sketches	DF	AJ,AH,PM,DF
BR 10	DF	AJ,AH,PM,DF
<b>Documentations type:</b>	<b>Executed</b>	<b>Respons</b>
Computer Drawing	DF	AJ,AH,PM,DF
<b>Necessary tools:</b>	<b>Executed.</b>	<b>Respons</b>
Revit programm	DF	AJ,AH,PM,DF

<b>Comments from the project -logbook</b>	<b>Executed</b>	<b>Respons.</b>
It tooks more time, because we had a new ideas all the time.		

**Data sheet for activity analysis**

<b>Phase description:</b>	BMP
<b>Date when analysis is done:</b>	25.03.2014
<b>Participants initials for the in the analysis</b>	DF,PM

<b>No</b>	<b>Activity name:</b>	<b>Reciever.</b>	<b>CLIENT</b>
7	U-value calculation	<b>Duration</b>	4h
		<b>Act. work</b>	20 h

**Illustration of the expected objective with activity.**

The screenshot shows a technical report titled 'U-VALUE REPORT' dated March 2014. It details the calculation of the U-value for a wall under 2m. The report includes a table for construction layers and a final calculation of the U-value, resulting in 0.34 W/m²K.

**Purpose with this activity:**  
We are doing u-value calculation to see if our house will not be too cold, how many heat we will lose and also how much money we will have to pay for the heating this house.

<b>Documents conten/Notes:</b>	<b>Executed</b>	<b>Respons</b>
Ds 418	DF, PM	DF, PM
Finished house	DF, PM	DF, PM
Part of the house	DF, PM	DF, PM
Formula	DF, PM	DF, PM
<b>Documentations type:</b>	<b>Executed</b>	<b>Respons</b>
Calculation	DF, PM	DF, PM
<b>Necessary tools:</b>	<b>Executed.</b>	<b>Respons</b>
Calculator,pen,paper,Excel	DF, PM	DF, PM

<b>Comments from the project -logbook</b>	<b>Executed</b>	<b>Respons.</b>

## Data sheet for activity analysis

<b>Phase description:</b>	BPM
<b>Date when analysis is done:</b>	24.03.2014
<b>Participants initials for the in the analysis</b>	AJ,PM,EH,DF

No	Activity name:	Reciever.	GROUP MEMBERS
8	Dead Load	<b>Duration</b>	2h
		<b>Act. work</b>	5 h

**Illustration of the expected objective with activity.**

**Dead Loads**  
External Wall (Bricks/brick)

Material	Thickness (mm)	Density (kN/m <sup>3</sup> )	Calculation	Weight (kN/m <sup>2</sup> )
Brick	100	19	0,19	1,9
Wood wool	100	0,04	0,04	0,4
Insulation	100	0,03	0,03	0,3
Brick	100	19	0,19	1,9
<b>Sum</b>				<b>4,5</b>
Done By: Alex				
Checked By: Alex				

**External Wall (Wooden Cladding)**

Material	Thickness (mm)	Density (kN/m <sup>3</sup> )	Calculation	Weight (kN/m <sup>2</sup> )
Brick	100	19	0,19	1,9
Wood wool	100	0,04	0,04	0,4
Insulation	100	0,03	0,03	0,3
Wood wool	100	0,04	0,04	0,4
Insulation	100	0,03	0,03	0,3
Wood wool	100	0,04	0,04	0,4
Insulation	100	0,03	0,03	0,3
Wooden cladding	30	5	0,15	1,5
<b>Sum</b>				<b>5,8</b>
Done By: Alex				
Checked By: Alex				

**Purpose with this activity:**  
We did it to calculate the load of the different parts from our house. It helps us to see if our house is stability. If not, we have to change some things in our project to make our house stability.

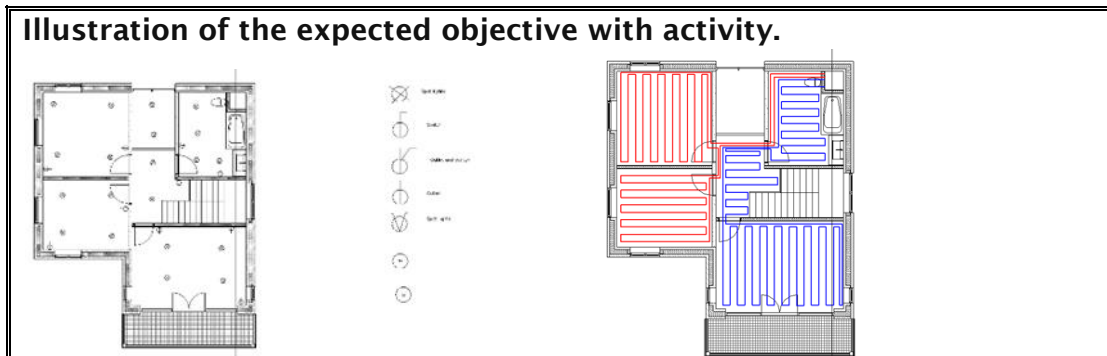
<b>Documents conten/Notes:</b>	<b>Executed</b>	<b>Respons</b>
Used materials	DF,AJ,PM,EH	DF,AJ,PM,EH
Knowledge	DF,AJ,PM,EH	DF,AJ,PM,EH
DS 410	DF,AJ,PM,EH	DF,AJ,PM,EH
Producent website	DF,AJ,PM,EH	DF,AJ,PM,EH
<b>Documentations type:</b>	<b>Executed</b>	<b>Respons</b>
Calculation	DF,AJ,PM,EH	DF,AJ,PM,EH
<b>Necessary tools:</b>	<b>Executed.</b>	<b>Respons</b>
Calculator,paper,pen,Word,Paint	DF,AJ,PM,EH	DF,AJ,PM,EH

<b>Comments from the project -logbook</b>	<b>Executed</b>	<b>Respons.</b>

## Data sheet for activity analysis

<b>Phase description:</b>	BPM
<b>Date when analysis is done:</b>	24.03.2014
<b>Participants initials for the in the analysis</b>	EH

<b>No</b>	<b>Activity name:</b>	<b>Reciever.</b>	CLIENT
9	Technical Instalations	<b>Duration</b>	3h
		<b>Act. work</b>	15h



**Purpose with this activity:**  
 We are doing this to show the instalations in ur house. How the ventilation goes,where is the socket, where the piper are going. That also show if the instalations i good, because we can ee on this drawing if there is some window or mayby a door where we can not do the instalations. That is also for a client to show him and give some knowledge about his house.

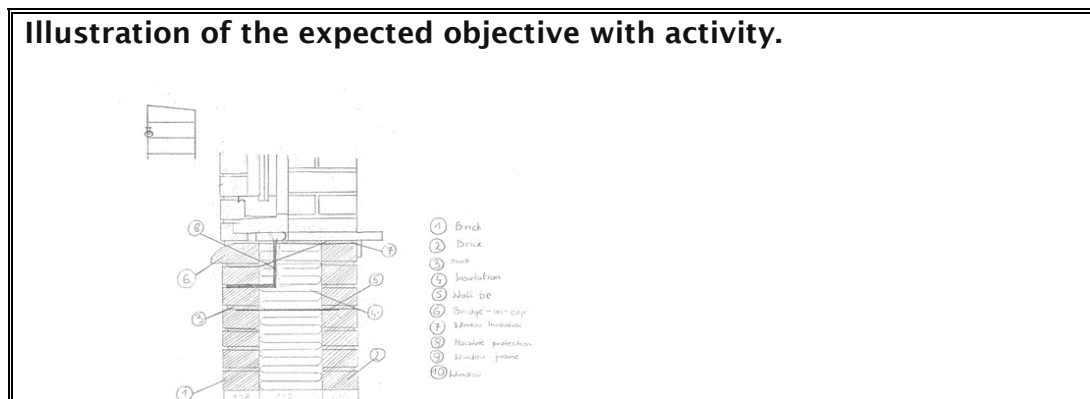
<b>Documents conten/Notes:</b>	<b>Executed</b>	<b>Respons</b>
Knowledge	EH	DF,PM
Ground Floor plans	EH	DF,PM
Presentation of technical instalations	EH	DF,PM
<b>Documentations type:</b>	<b>Executed</b>	<b>Respons</b>
Drawing	EH	DF,PM
<b>Necessary tools:</b>	<b>Executed.</b>	<b>Respons</b>
Paper,pencil,ruler,color pen	EH	DF,PM

<b>Comments from the project -logbook</b>	<b>Executed</b>	<b>Respons.</b>

## Data sheet for activity analysis

<b>Phase description:</b>	BPM
<b>Date when analysis is done:</b>	28.03.2014
<b>Participants initials for the in the analysis</b>	AJ,PM,EH,PM

<b>No</b>	<b>Activity name:</b>	<b>Reciever.</b>	<b>CLIENT</b>
10	Detail Drawings	<b>Duration</b>	10h
		<b>Act. work</b>	42 h



**Purpose with this activity:**  
We are doing detil drawings to show the connetction between parts of the house. That help us to understand the construction of our house and help to see if we have some problem. That give us more knowledge about the size of the materials and regulations.

<b>Documents conten/Notes:</b>	<b>Executed</b>	<b>Respons</b>
BR 10	AJ,PM,AH,DF	AJ,PM,AH,DF
Finished house	AJ,PM,AH,DF	AJ,PM,AH,DF
Knowledge	AJ,PM,AH,DF	AJ,PM,AH,DF
Presentation of construction	AJ,PM,AH,DF	AJ,PM,AH,DF
<b>Documentations type:</b>	<b>Executed</b>	<b>Respons</b>
Drawings	AJ,PM,AH,DF	AJ,PM,AH,DF
<b>Necessary tools:</b>	<b>Executed.</b>	<b>Respons</b>
Paper,pencil,ruler	AJ,PM,AH,DF	AJ,PM,AH,DF

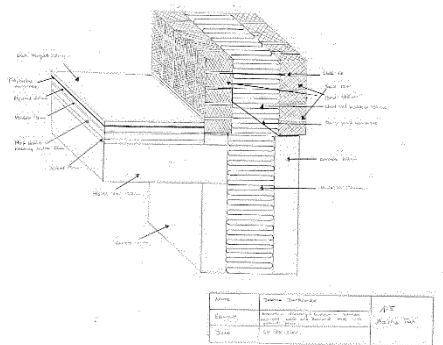
<b>Comments from the project -logbook</b>	<b>Executed</b>	<b>Respons.</b>

## Data sheet for activity analysis

<b>Phase description:</b>	BPM
<b>Date when analysis is done:</b>	28.03.2014
<b>Participants initials for the in the analysis</b>	AJ,PM,EH,PM

<b>No</b>	<b>Activity name:</b>	<b>Reciever.</b>	<b>CLIENT</b>
11	Isometric Drawing	<b>Duration</b>	3h
		<b>Act. work</b>	6h

**Illustration of the expected objective with activity.**



**Purpose with this activity:**

We are doing to isometric drawing to show the connetcion between parts of the house. That help us to understand the construction of our house and help to see if we have some problem. That give us more knowledge about the size of the materials and regulations. The isometric drawing shows more information than detail because we can see the interior of the materials.

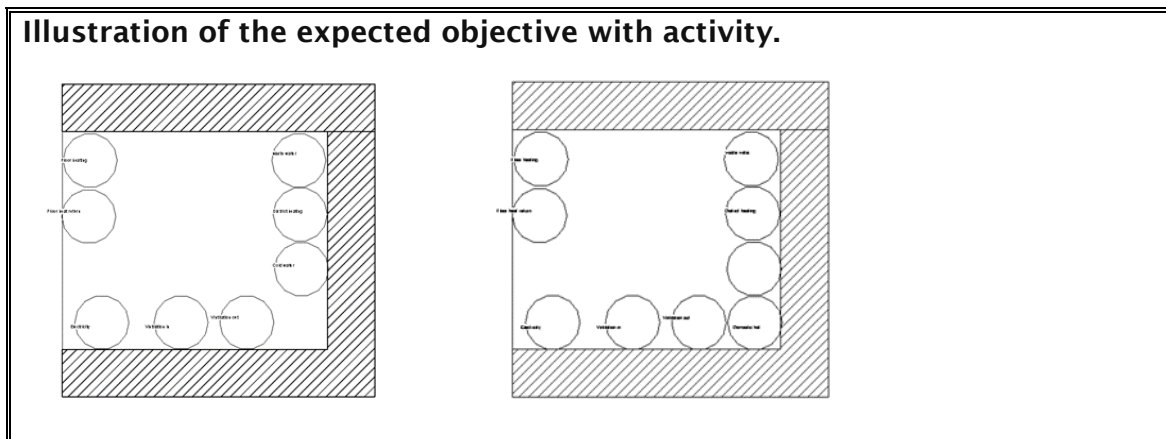
<b>Documents conten/Notes:</b>	<b>Executed</b>	<b>Respons</b>
Br 10	AJ,DF,PM,EH	AJ,DF,PM,EH
Finished house	AJ,DF,PM,EH	AJ,DF,PM,EH
Knowledge	AJ,DF,PM,EH	AJ,DF,PM,EH
<b>Documentations type:</b>	<b>Executed</b>	<b>Respons</b>
Drawings,	AJ,DF,PM,EH	AJ,DF,PM,EH
<b>Necessary tools:</b>	<b>Executed.</b>	<b>Respons</b>
Paper,Pencil, Ruler	AJ,DF,PM,EH	AJ,DF,PM,EH

<b>Comments from the project -logbook</b>	<b>Executed</b>	<b>Respons.</b>

Data sheet for activity analysis

<b>Phase description:</b>	BPM
<b>Date when analysis is done:</b>	26.03.2014
<b>Participants initials for the in the analysis</b>	AJ

No	Activity name:	Reciever.	GROUP MEMBERS
12	Shaft Drawing	<b>Duration</b>	3h
		<b>Act. work</b>	10 h



**Purpose with this activity:**  
 We did this to show how exactly we located our pipes in shaft. It help us to see any mistakes in this shaft: maybe it is too small, maybe we do not have access to this shaft. That is also helpful for a client to understand installations in his house.

Documents conten/Notes:	Executed	Respons
BR 10	Eh,	AJ,DF
Location of the shft	Eh,	AJ,DF
Pipes	Eh,	AJ,DF
<b>Documentations type:</b>	<b>Executed</b>	<b>Respons</b>
Drawing	Eh,	DF
<b>Necessary tools:</b>	<b>Executed.</b>	<b>Respons</b>
Paper,pencil,ruler	EH	EH

Comments from the project -logbook	Executed	Respons.

## Data sheet for activity analysis



<b>Phase description:</b>	BPM
<b>Date when analysis is done:</b>	20.03.2014
<b>Participants initials for the in the analysis</b>	AJ

<b>No</b>	<b>Activity name:</b>	<b>Receiver.</b>	<b>CLIENT</b>
13	Building Component Journal	<b>Duration</b>	5h
		<b>Act. work</b>	50 h

**Illustration of the expected objective with activity.**

200 A 01	Foundation System (30tp foundation)	Page 1 Date: 07.03.2014
<b>Building part/subject/location:</b>	<b>Functions and material demands for the building component part/object of construction of the component:</b>	<b>Building product:</b> (Type/dimensions/thickness etc.)
	<p>The foundation is the connection between the house and the this means the structural element that transmits load from the house to firm bearing stratum.</p> <p>Foundations must be taken down to frost-free depth and load bearing ground or must otherwise be constructed so as to prevent damage resulting from earth sur- face movements.</p> <p>Buildings must be built so as to prevent water, moisture and damp from causing damage or so-deteriorating serviceability, impairing durability and violating health and safety conditions.</p> <p>The depth of a foundation is measured from existing ground and ground level to the bottom of the excavation The bottom of the excavation must be at non-freezing depth in Denmark this is normally 0.3m below the surface.</p> <p>The foundation width is measured at the narrowest point of the excavation) shattering The foundation must have the same width as the wall above and should be placed symmetrically below this.</p> <p><b>By dividing physical limitations</b></p> <ul style="list-style-type: none"> <li>-By being underground, physical safe</li> <li>-By giving firetechnical safety</li> <li>-By being sustainable, during age and time</li> <li>-By being sustainable for heat/cold</li> <li>-By being stable when affected by moist-humidity</li> <li>-By being solid for pressure</li> <li>-By being impact strengthened</li> <li>-By being load transferring</li> <li>-By allowing passage possibility</li> <li>-By being fixable in the construction</li> </ul> <p>By working well with the other components materials</p>	<p><b>Execution/build up of the construction:</b></p> <ul style="list-style-type: none"> <li>-We make a whole in the soil: 900 mm</li> <li>-On this whole we put mm of leca blocks.</li> <li>-On the leca blocks we put a 450 mm of concrete with metal stn</li> <li>-After that we need to wait, around 3-2 days (it depends on the weather) when the concrete will dry</li> </ul>

200 01	Down	Page 5 Date: 11.03.2014
<b>Building part/subject/location:</b>	<b>Functions and material demands for the building component part/object of construction of the component:</b>	<b>Building product:</b> (Type/dimensions/thickness etc.)
	<p>Down on these rooms must be easy to open without keys or tools during the hours when the building is in use. Doors on escape routes which are used by large numbers of people must open in the direction of escape.</p> <p><b>By dividing physical limitations</b></p> <ul style="list-style-type: none"> <li>-Ground floor</li> <li>-1st floor</li> <li>-2nd floor</li> <li>-Curten-walk 000 class</li> <li>-900 Single Floor 900x2013 (1x)</li> </ul> <p>By working well with other components materials</p>	<p><b>Execution/build up of the construction:</b></p> <p>Basement</p> <ul style="list-style-type: none"> <li>900 Single Floor 900x2013 (1x)</li> <li>900 Single Floor 900x2013 (1x)</li> </ul>

**Purpose with this activity:**

We are doing this to get more knowledge about the construction of the house. After finish this BCJ we will know what kind of materials are in our house, where it is exactly, how to mounted together... It is the another type of learning the different parts of the house- by doing the analysis of the house.

Documents conten/Notes:	Executed	Respons
BR 10	AJ	DF, PM
Codes	AJ	DF, PM
Knowledge	AJ	DF, PM
Materials	AJ	DF, PM
Documentations type:	Executed	Respons
Analysis	AJ	DF, PM
Necessary tools:	Executed.	Respons
Table with code, Excel	AJ	AJ

Comments from the project -logbook	Executed	Respons.

**Data sheet for activity analysis**

<b>Phase description:</b>	BPM
<b>Date when analysis is done:</b>	25.03.2014
<b>Participants initials for the in the analysis</b>	AJ

<b>No</b>	<b>Activity name:</b>	<b>Reciever.</b>	<b>CLIENT</b>
14	Room schedule	<b>Duration</b>	1 h
		<b>Act. work</b>	1 h

**Illustration of the expected objective with activity.**

Room	Floor	Ceiling	In.Wall	Ex.Wall	Equipment
<b>Basement</b>					
Utility Room	LW Concrete	Concrete Slab	Concrete	Concrete	
Hobby room	LW Concrete	Concrete Slab	Concrete	Concrete	
Hall	LW Concrete	Concrete Slab	Concrete	Concrete	
Laundry room	LW Concrete	Concrete Slab	Concrete	Concrete	Washing machine,dryer
<b>Ground floor</b>					
Entrance	Wood	Plasterboard	Brick cladding	Brick	
Kitchen	Wood	Plasterboard	Brick cladding	Brick	Fridge, Sink,Dishwasher,Owner
Bathroom GF	Wood	Plasterboard	Tiles	Brick	Sink, Shower, Toilet
Living Room	Tiles	Plasterboard	Brick cladding	Brick	
Dinning Room	Oak Parquet	Plasterboard	Brick cladding	Brick	
<b>1st Floor</b>					
Bedroom 1 1st	Oak Parquet	Plasterboard	Brick cladding	Brick	
Bedroom 2 1st	Oak Parquet	Plasterboard	Brick cladding	Brick	
Bedroom 3 1st	Oak Parquet	Plasterboard	Brick cladding	Brick	
Bathroom 1st	Tiles	Plasterboard	Tiles	Brick	Sink, Shower, Toilet

**Purpose with this activity:**

The room schedule is to show closer the materials which we used in the house. The schedule include rooms and different parts of the house: walls,floor,ceiling and equipment.

<b>Documents conten/Notes:</b>	<b>Executed</b>	<b>Respons</b>
Rooms	AJ	DF
Parts of the house	AJ	DF DF
Materials	AJ	DF
<b>Documentations type:</b>	<b>Executed</b>	<b>Respons</b>
Analysis	Aj	DF
<b>Necessary tools:</b>	<b>Executed.</b>	<b>Respons</b>
excel	AJ	AJ

<b>Comments from the project -logbook</b>	<b>Executed</b>	<b>Respons.</b>

**Data sheet for activity analysis**

<b>Phase description:</b>	BPM
<b>Date when analysis is done:</b>	20.03.2014
<b>Participants initials for the in the analysis</b>	AJ,DF,PM,EH

No	Activity name:	Reciever.	GROUP MEMBERS
15	Quality assurance	<b>Duration</b>	1h
		<b>Act. work</b>	1h

**Illustration of the expected objective with activity.**

**Purpose with this activity:**  
We did this to check the project of other group. The group from B class checked our project and wrote what is wrong, what we should change and so on. It helps us to see mistakes in our project.

<b>Documents conten/Notes:</b>	<b>Executed</b>	<b>Respons</b>
Detail drawing	AJ,DF,PM,EH	AJ,DF,PM,EH
BCJ	AJ,DF,PM,EH	AJ,DF,PM,EH
Activity Analysis	AJ,DF,PM,EH	AJ,DF,PM,EH
Knowledge	AJ,DF,PM,EH	AJ,DF,PM,EH
<b>Documentations type:</b>	<b>Executed</b>	<b>Respons</b>
Analysis	AJ,DF,PM,EH	AJ,DF,PM,EH
<b>Necessary tools:</b>	<b>Executed.</b>	<b>Respons</b>
Paper,stempel	AJ,DF,PM,EH	AJ,DF,PM,EH

<b>Comments from the project -logbook</b>	<b>Executed</b>	<b>Respons.</b>

## Data sheet for activity analysis

<b>Phase description:</b>	BPM
<b>Date when analysis is done:</b>	27.03.2014
<b>Participants initials for the in the analysis</b>	PM

<b>No</b>	<b>Activity name:</b>	<b>Reciever.</b>	<b>CLIENT</b>
16	Price estimation	<b>Duration</b>	3h
		<b>Act. work</b>	7h

**Illustration of the expected objective with activity.**

Summary 27. marts 2014

Num	DBK kode	navn	Unit	Unit SP	Sales Price
		Electrical installations		127.425,40	127.425,40
		Inventory			
		Fix furniture		129.912,50	129.912,50
		Other component parts			
		Building Site		0,00	0,00
		balony		8.040,15	8.040,15
					2.580.064,00
<b>Supplement:</b>					
		Client mandatory insurance			10.000,00
		Land Registration			5.000,00
		Fer 12% of total construction sum			429.560,00
		Unexpected sundries 10 % of total const. sum			392.150,00
		Site management 2% of total const. sum			79.430,00
		<b>Total amount</b>			<b>5.269.816,00</b>
		<b>VAT (25%)</b>			<b>1.317.454,00</b>
		<b>Total amount incl. VAT</b>			<b>6.587.270,00</b>

**Purpose with this activity:**

We are doing price estimation to calculate the whole costs of building the house.

<b>Documents conten/Notes:</b>	<b>Executed</b>	<b>Respons</b>
Materials	PM	PM
<b>Documentations type:</b>	<b>Executed</b>	<b>Respons</b>
Calculation	PM	PM
<b>Necessary tools:</b>	<b>Executed.</b>	<b>Respons</b>
Sigma	PM	PM

**Comments from the project -logbook**

**Executed**

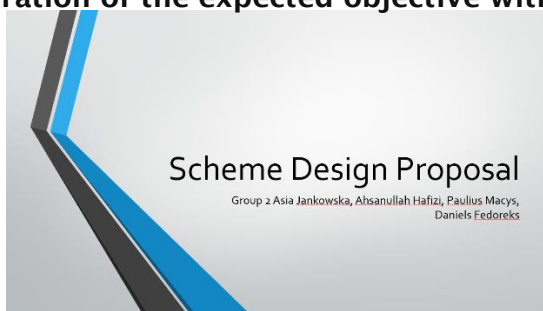
**Respons.**

## Data sheet for activity analysis

<b>Phase description:</b>	BPM
<b>Date when analysis is done:</b>	28.03.2014
<b>Participants initials for the in the analysis</b>	AJ,PM,EH,Df

<b>No</b>	<b>Activity name:</b>	<b>Reciever.</b>	CLIENT
17	Presentation	<b>Duration</b>	2h
		<b>Act. work</b>	4h

### Illustration of the expected objective with activity.



### Purpose with this activity:

We are doing this presentation to show all of materials which we did during the whole project. We will present it to our client.

<b>Documents conten/Notes:</b>	<b>Executed</b>	<b>Respons</b>
Sketches	AJ,PM,EH,Df	AJ,PM,EH,Df
Revit Drawings	AJ,PM,EH,Df	AJ,PM,EH,Df
Technical Instalations	AJ,PM,EH,Df	AJ,PM,EH,Df
Price estimation	AJ,PM,EH,Df	AJ,PM,EH,Df
Detail Drawing	AJ,PM,EH,Df	AJ,PM,EH,Df
Planning	AJ,PM,EH,Df	AJ,PM,EH,Df
<b>Documentations type:</b>	<b>Executed</b>	<b>Respons</b>
Presentation	AJ,PM,EH,Df	AJ,PM,EH,Df
<b>Necessary tools:</b>	<b>Executed.</b>	<b>Respons</b>
PowerPoint	AJ,PM,EH,Df	AJ,PM,EH,Df

<b>Comments from the project -logbook</b>	<b>Executed</b>	<b>Respons.</b>

# DD1

28.04.2014-27.06.2014

## Data sheet for activity analysis

<b>Phase description:</b>	BPM
<b>Date when analysis is done:</b>	28.04.2017
<b>Participants initials for the in the analysis</b>	Aj,Pm,Df,Eh

<b>No</b>	<b>Activity name:</b>	<b>Reciever.</b>	<b>CLIENT</b>
18	Group contract	<b>Duration</b>	1h
		<b>Act. work</b>	1h

### Illustration of the expected objective with activity.

Group contract (1-7)

- 1) Take group contract more seriously.
- 2) Having a group meeting (everybody must be present).
- 3) Every group member should appear in school everyday.
- 4) We are doing most of tasks at school.
- 5) You check the conversation for mistakes and send the questions to Danish by 2000 the day before the consultation. Then Danish will send the Agenda to the teacher.
- 6) If any group member has a problem, we are talking about it in group.
- 7) Every problem is resolved by voting.
- 8) Everyone must have an opinion.
- 9) If you are going to be late or you are not coming to school you have to inform the rest of your group members.
- 10) If one of group member is involved with the task, someone else from the group needs to check it and approve it.
- 11) All of group members can tell you that you need to work faster.
- 12) Every of group members should be responsible for his part of project.
- 13) Inform the rest of the group about any kind of changes in a project.
- 14) Every problem in a group is firstly considered from the group contract. If you don't fulfil the group contract, and after talking with the rest of the group and teachers you don't agree with the group members, your chances or ideas are refused and some of consequences will be shown.

Aida Eimbovská  
 Mail: [aida.eimbovska@gmail.com](mailto:aida.eimbovska@gmail.com)  
 Telephone: 55 2767979  
 Espen Hoff  
 Mail: [espenhoff@math.uu.se](mailto:espenhoff@math.uu.se)  
 Telephone: 07 962760  
 Daniel Salmons  
 Mail: [daniel.salmons@vda.aarhusotech.dk](mailto:daniel.salmons@vda.aarhusotech.dk)  
 Telephone: 98222596

### Purpose with this activity:

We did group contract to have some rules. That will help us with work in group: Finish our tasks on time. Come to school every day. Stay after lesson until we finish the task for the day.

<b>Documents conten/Notes:</b>	<b>Executed</b>	<b>Respons</b>
Rules	AJ,DF,PM,EH	AJ,DF,PM,EH
Names	AJ,DF,PM,EH	AJ,DF,PM,EH
Phone numbers	AJ,DF,PM,EH	AJ,DF,PM,EH
Mail address	AJ,DF,PM,EH	AJ,DF,PM,EH
<b>Documentations type:</b>	<b>Executed</b>	<b>Respons</b>
Contract	AJ,DF,PM,EH	AJ,DF,PM,EH
<b>Necessary tools:</b>	<b>Executed.</b>	<b>Respons</b>
Word	AJ,DF,PM,EH	AJ,DF,PM,EH

<b>Comments from the project -logbook</b>	<b>Executed</b>	<b>Respons.</b>

## Data sheet for activity analysis

<b>Phase description:</b>	BPM
<b>Date when analysis is done:</b>	28.04.2014
<b>Participants initials for the in the analysis</b>	Aj,Pm,Df,Eh

<b>No</b>	<b>Activity name:</b>	<b>Reciever.</b>	<b>CLIENT</b>
19	Business report	<b>Duration</b>	5h
		<b>Act. work</b>	9 h

### Illustration of the expected objective with activity.

Group contract (1-7)

- 1) Take group contract more seriously.
- 2) Having a group meeting (everybody must be present).
- 3) Every group member should appear in school agenda.
- 4) We are doing most of tasks at school.
- 5) You check the conversation for correctness and send the questions to Danish by 2000 the day before the consultation. Then Danish will send the Agenda to the teacher.
- 6) If a group member has a problem, we are talking about it in group.
- 7) Every problem is resolved by voting.
- 8) Everyone must have an opinion.
- 9) If you are going to be late or you are not coming to school you have to inform the rest of your group members.
- 10) If one of group member is involved with the task, someone else from the group needs to check it and approve it.
- 11) All of group members can tell you that you need to work faster.
- 12) Every of group members should be responsible for his part of project.
- 13) Inform the rest of the group about a kind of changes in a project.
- 14) Every problem in a group is firstly considered from the group contract. If you don't fulfil the group contract, and after talking with the rest of the group and haven't you don't agree with the group members, your changes or ideas are refused and some of consequences will be shown.

Ada Eimbovika  
Mail: ada.eimbovika@gmail.com  
Telephone: 91297979

Esben Hoff  
Mail: esbenhoff@businessacademy.dk  
Telephone: 91297979

Danish Talskreds  
Mail: danish.talskreds@businessacademy.dk  
Telephone: 91222596

### Purpose with this activity:

We are doing this report to know our expenses, with what kind of producers we are working with, our budget and so on.

<b>Documents conten/Notes:</b>	<b>Executed</b>	<b>Respons</b>
Calculate the economic data	AJ,DF,PM,EH	AJ,DF,PM,EH
Knowledge	AJ,DF,PM,EH	AJ,DF,PM,EH
Part of the house	AJ,DF,PM,EH	AJ,DF,PM,EH
<b>Documentations type:</b>	<b>Executed</b>	<b>Respons</b>
Report	AJ,DF,PM,EH	AJ,DF,PM,EH
<b>Necessary tools:</b>	<b>Executed.</b>	<b>Respons</b>
Word	AJ,DF,PM,EH	AJ,DF,PM,EH

<b>Comments from the project -logbook</b>	<b>Executed</b>	<b>Respons.</b>



## Data sheet for activity analysis

<b>Phase description:</b>	BPM
<b>Date when analysis is done:</b>	26.05.2014
<b>Participants initials for the in the analysis</b>	Aj,Pm,Df,Eh

No	Activity name:	Reciever.	GROUP MEMBERS
20	Building site assignment	<b>Duration</b>	10h
		<b>Act. work</b>	12h

### Illustration of the expected objective with activity.

**Group contract (v. 7)**

- 1) Take group contract more seriously.
- 2) Having a group meeting everybody must be present.
- 3) Every group member should appear in school everyday.
- 4) We are doing most of tasks at school.
- 5) We check the calendar for our tasks and send the questions to Danish by 2000 the day before the consultation. Then Danish will send the Agenda to the teacher.
- 6) If any group member has a problem, we are taking about it in group.
- 7) Every problem is resolved by voting.
- 8) Everyone must have an opinion.
- 9) If you are going to be late or you are not coming to school you have to inform the rest of your group members.
- 10) If one of group member is finished with the task, someone else from the group needs to check it and approve it.
- 11) All of group members can tell you that you need to work faster.
- 12) Every of group members should be responsible for his part of project.
- 13) Inform the rest of the group about any kind of changes in a project.
- 14) Every problem in a group is fully considered from the group contract. If you don't fulfil the group contract, and after talking with the rest of the group and teachers you won't agree with the group members, your changes or ideas are without any of consequences will be given.

Ada Lambouka  
Mob: 44330344@vodafone.aarhusnet.dk  
Telephone: 9129270

Ellen Hoff  
Mob: 44330344@vodafone.aarhusnet.dk  
Telephone: 9129270

Henrik Jørgensen  
Mob: 44330344@vodafone.aarhusnet.dk  
Telephone: 91225380

### Purpose with this activity:

We did group contract to have some rules. That will help us with work in group: Finish our tasks on time. Come to school every day. Stay after lesson until we finish the task for the day.

Documents conten/Notes:	Executed	Respons
Plot	AJ,DF,PM,EH	AJ,DF,PM,EH
Camera	AJ,DF,PM,EH	AJ,DF,PM,EH
Knowledge	AJ,DF,PM,EH	AJ,DF,PM,EH
	AJ,DF,PM,EH	AJ,DF,PM,EH
Documentations type:	Executed	Respons
Report	AJ,DF,PM,EH	AJ,DF,PM,EH
Necessary tools:	Executed.	Respons
Word	AJ,DF,PM,EH	AJ,DF,PM,EH

Comments from the project -logbook	Executed	Respons.

## Data sheet for activity analysis

<b>Phase description:</b>	BPM
<b>Date when analysis is done:</b>	07.05.2014
<b>Participants initials for the in the analysis</b>	AJ, EH

<b>No</b>	<b>Activity name:</b>	<b>Reciever.</b>	GROUP MEMBERS
21	Precedence diagram	<b>Duration</b>	1h
		<b>Act. work</b>	2h

### Illustration of the expected objective with activity.



### Purpose with this activity:

We are doing this diagram to present which tasks are going after the another one. It is help us to do everything in a good order and we know what we need to finish before we will start another task.

<b>Documents conten/Notes:</b>	<b>Executed</b>	<b>Respons</b>
Tasks	AJ, EH	DF,PM
Knowledge	AJ, EH	DF,PM
<b>Documentations type:</b>	<b>Executed</b>	<b>Respons</b>
Analysis	AJ, EH	DF,PM
<b>Necessary tools:</b>	<b>Executed.</b>	<b>Respons</b>
Paper, pen,word	AJ, EH	DF,PM

<b>Comments from the project -logbook</b>	<b>Executed</b>	<b>Respons.</b>

## Data sheet for activity analysis

<b>Phase description:</b>	BPM
<b>Date when analysis is done:</b>	21.05.2014
<b>Participants initials for the in the analysis</b>	AJ

<b>No</b>	<b>Activity name:</b>	<b>Reciever.</b>	<b>CLIENT</b>
22	Cad Manual	<b>Duration</b>	14h
		<b>Act. work</b>	20 h

### Illustration of the expected objective with activity.



ARCHITECTURAL TECHNOLOGY AND CONSTRUCTION MANAGEMENT  
GROUP 2: ARIAN, ANDREW, PHILIP, NICK, DANIEL, FEDERICO, LUIS, DAN, PHILIP  
CLASS: 13UR2A20A  
21.05.2014

Component	Dimensions	Orientation	Symbol
Window- 1st floor	Two-Light Horizontal 12x14 M	North	
Window- 1st floor	Two-Light Horizontal 12x12 M	West	
Window- 1st floor	Two-Light Horizontal 12x12 M	West	
Window- 1st floor	Single-light 612x 2212 mm	West	
Window- 1st floor	Two-Light Horizontal 12x14 M	South	
Window- 1st floor	Curtain Wall	South	
Window- 1st floor	Single-light 612x 2212 mm	East	
Window- 1st floor	Two-Light Horizontal 16x35 M	East	

### Purpose with this activity:

To make a small report with whole kind of walls, floors, widnows, doors, stairs, furnitures. It is include all of materials which we will used for the house. It is also for a client, to show him and intruduce him to his house. We exactly know what we have in that house.

<b>Documents conten/Notes:</b>	<b>Executed</b>	<b>Respons</b>
Revit	Aj	Df, Pm, Eh
Finished house	Aj	Df, Pm, Eh
Discuss the type of hatching in revit	Aj, Df, Pm, Eh	Aj, Df, Pm, Eh
<b>Documentations type:</b>	<b>Executed</b>	<b>Respons</b>
Report	Aj	Df, Pm, Eh
<b>Necessary tools:</b>	<b>Executed.</b>	<b>Respons</b>
Excel, word	Aj	Df, Pm, Eh

<b>Comments from the project -logbook</b>	<b>Executed</b>	<b>Respons.</b>

## Data sheet for activity analysis

<b>Phase description:</b>	BPM
<b>Date when analysis is done:</b>	01.06.2014
<b>Participants initials for the in the analysis</b>	Aj

<b>No</b>	<b>Activity name:</b>	<b>Reciever.</b>	<b>GROUP MEMBERS</b>
23	Drainage calculations	<b>Duration</b>	30 h
		<b>Act. work</b>	32 h

### Illustration of the expected objective with activity.

No	Activity name	Network										Drainage system										Drainage system																			
		Node					Link					Pipe					Manhole					Inlet					Outlet														
23	Drainage calculations	1	2	3	4	5	6	7	8	9	10	11	12	13	14	15	16	17	18	19	20	21	22	23	24	25	26	27	28	29	30	31	32	33	34	35	36	37	38	39	40

### Purpose with this activity:

We are doing this calculations to choose the correct size and types of pipes. We wanted to avoid pipes destruction. It could happen when the pipes are too small and the pressure is too big.

<b>Documents conten/Notes:</b>	<b>Executed</b>	<b>Respons</b>
Pipes	Aj	DF, PM, EH
Drainage Plan	Aj	DF, PM, EH
Tables in DS 432	Aj	DF, PM, EH
Revit	Aj	DF, PM, EH
<b>Documentations type:</b>	<b>Executed</b>	<b>Respons</b>
Calculations	Aj	DF, PM, EH
<b>Necessary tools:</b>	<b>Executed.</b>	<b>Respons</b>
Excel	Aj	DF, PM, EH

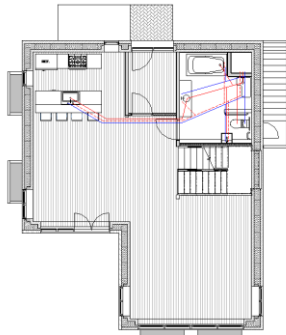
<b>Comments from the project -logbook</b>	<b>Executed</b>	<b>Respons.</b>

## Data sheet for activity analysis

<b>Phase description:</b>	BPM
<b>Date when analysis is done:</b>	28.05.2014
<b>Participants initials for the in the analysis</b>	EH

<b>No</b>	<b>Activity name:</b>	<b>Reciever.</b>	GROUP MEMBERS
24	Drainage Plan	<b>Duration</b>	5h
		<b>Act. work</b>	3,5 h

### Illustration of the expected objective with activity.



### Purpose with this activity:

We are doing this to show the placement of the pipes in the house. It is also for plumbing people to know where they need to dig a whole for pipes.

<b>Documents conten/Notes:</b>	<b>Executed</b>	<b>Respons</b>
Revit (bathrooms and kitchen)	EH	AJ,DF,PM
Knowledge	EH	AJ,DF,PM
Building Regulations	EH	AJ,DF,PM
<b>Documentations type:</b>	<b>Executed</b>	<b>Respons</b>
Plans	EH	AJ,DF,PM
<b>Necessary tools:</b>	<b>Executed.</b>	<b>Respons</b>
Revit	EH	AJ,DF,PM

<b>Comments from the project -logbook</b>	<b>Executed</b>	<b>Respons.</b>

## Data sheet for activity analysis

<b>Phase description:</b>	BPM
<b>Date when analysis is done:</b>	16.05.2014
<b>Participants initials for the in the analysis</b>	PM

<b>No</b>	<b>Activity name:</b>	<b>Reciever.</b>	CLIENT
25	Energy calculations	<b>Duration</b>	20h
		<b>Act. work</b>	25 h

### Illustration of the expected objective with activity.

Key numbers, kWh/m <sup>2</sup> year		
Energy frame in BR 2010		
Without supplement	Supplement for special condions	Total energy frame
29,1	0,0	29,1
<b>Total energy requirement</b>		<b>29,1</b>
Energy frame low energy buildings 2015		
Without supplement	Supplement for special condions	Total energy frame
24,0	0,0	24,0
<b>Total energy requirement</b>		<b>24,0</b>
Energy frame Buildings 2020		
Without supplement	Supplement for special condions	Total energy frame
20,0	0,0	20,0
<b>Total energy requirement</b>		<b>20,0</b>
Contribution to energy requirement		Net requirement
Heat	20,5	Room heating
El. for operation of building	13,0	Domestic hot water
Excessive in rooms	4,7	Cooling
		0,8
Selected electricity requirements		Heat loss from installations
Lighting	0,0	Room heating
Heating of rooms	0,0	Domestic hot water
Heating of DHW	18,5	
Heat pump	0,0	Output from special sources
Ventilators	2,1	Solar heat
Pumps	0,3	Heat pump
Cooling	0,0	Solar cells
Total el. consumption	37,3	Wind mills
		0,0

### Purpose with this activity:

We are doing this to calculate how many energy our house will use.

Documents conten/Notes:	Executed	Respons
Finished house	PM	AJ,DF,EH
Knowledge	PM	AJ,DF,EH
Tables	PM	AJ,DF,EH
BE 10	PM	AJ,DF,EH
Documentations type:	Executed	Respons
Calculations	PM	AJ,DF,EH
Necessary tools:	Executed.	Respons
BE 10	PM	AJ,DF,EH

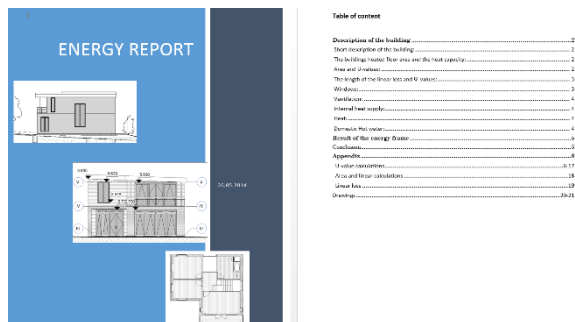
Comments from the project -logbook	Executed	Respons.

## Data sheet for activity analysis

<b>Phase description:</b>	BPM
<b>Date when analysis is done:</b>	26.05.2014
<b>Participants initials for the in the analysis</b>	AJ,PM

<b>No</b>	<b>Activity name:</b>	<b>Reciever.</b>	<b>CLIENT</b>
26	Energy report	<b>Duration</b>	10h
		<b>Act. work</b>	12 h

### Illustration of the expected objective with activity.



**ENERGY REPORT**

Table of content

- Description of the building.....2
- Short description of the building.....2
- The building's main flow and the heat capacity.....2
- Area and volume.....2
- The length of the linear heat capacity.....3
- Windows.....3
- Wall area.....4
- Internal heat capacity.....4
- Heat.....4
- Structure flow rate.....4
- Structure of the energy flow.....5
- Conclusion.....5
- Appendix.....6
- 1. Linear heat capacity.....17
- Area and linear calculations.....18
- Linear heat.....19
- Conclusion.....20

### Purpose with this activity:

We are doing this to describe the whole energy of the house How much energy it will used and lose. It shows exactly every part of the house.

<b>Documents conten/Notes:</b>	<b>Executed</b>	<b>Respons</b>
BE 10	AJ,PM	DF,EH
Information about house	AJ,PM	DF,EH
Knowledge	AJ,PM	DF,EH
<b>Documentations type:</b>	<b>Executed</b>	<b>Respons</b>
Report	AJ,PM	DF,EH
<b>Necessary tools:</b>	<b>Executed.</b>	<b>Respons</b>
Word	AJ,PM	DF,EH

<b>Comments from the project -logbook</b>	<b>Executed</b>	<b>Respons.</b>

## Data sheet for activity analysis

<b>Phase description:</b>	BPM
<b>Date when analysis is done:</b>	23.05.2014
<b>Participants initials for the in the analysis</b>	DF

<b>No</b>	<b>Activity name:</b>	<b>Reciever.</b>	<b>CLIENT</b>
27	Tender Timeschedule	<b>Duration</b>	1 h
		<b>Act. work</b>	4 h

### Illustration of the expected objective with activity.



### Purpose with this activity:

In Ms project we are showing what kind of employees are coming to your house and doing their job. It shows various stages of construction.

<b>Documents conten/Notes:</b>	<b>Executed</b>	<b>Respons</b>
Parts of the house	DF	AJ,PM,EH
Time	DF	AJ,PM,EH
Knowledge	DF	AJ,PM,EH
Special people-	DF	AJ,PM,EH
<b>Documentations type:</b>	<b>Executed</b>	<b>Respons</b>
Analysis	DF	AJ,PM,EH
<b>Necessary tools:</b>	<b>Executed.</b>	<b>Respons</b>
Ms project	DF	AJ,PM,EH

<b>Comments from the project -logbook</b>	<b>Executed</b>	<b>Respons.</b>



## Data sheet for activity analysis

<b>Phase description:</b>	BPM
<b>Date when analysis is done:</b>	
<b>Participants initials for the in the analysis</b>	PM

No	Activity name:	Reciever.	GROUP MEMBERS
28	Wet rooms	<b>Duration</b>	5h
		<b>Act. work</b>	h

**Illustration of the expected objective with activity.**

**Purpose with this activity:**

We are doing this to check if our room( bathroom,kitchen,laundry room) is waterproof. We wanted to avoid moisture and fungus in that room or the room next to them.

<b>Documents conten/Notes:</b>	<b>Executed</b>	<b>Respons</b>
Bathrooms/kitchen/laundry room	PM	AJ,DF,EH
Knowledge	PM	AJ,DF,EH
Building regulations	PM	AJ,DF,EH
	PM	AJ,DF,EH
<b>Documentations type:</b>	<b>Executed</b>	<b>Respons</b>
Analysis	PM	AJ,DF,EH
<b>Necessary tools:</b>	<b>Executed.</b>	<b>Respons</b>
Revit	PM	AJ,DF,EH

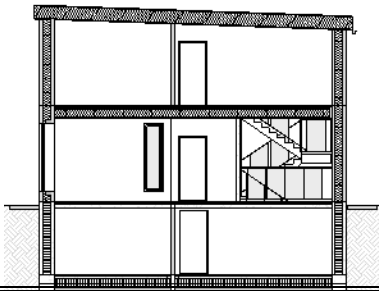
<b>Comments from the project -logbook</b>	<b>Executed</b>	<b>Respons.</b>

## Data sheet for activity analysis

<b>Phase description:</b>	BPM
<b>Date when analysis is done:</b>	
<b>Participants initials for the in the analysis</b>	DF

<b>No</b>	<b>Activity name:</b>	<b>Reciever.</b>	CLIENT
29	Fire plans	<b>Duration</b>	5h
		<b>Act. work</b>	h

**Illustration of the expected objective with activity.**



**Purpose with this activity:**

We are doing this to check if our house is enough safety. We also show where are the rescue opening and how much time residents have time until the house will burn.

<b>Documents conten/Notes:</b>	<b>Executed</b>	<b>Respons</b>
House	DF	AJ,PM,EH
Building regulations	DF	AJ,PM,EH
Knowledge	DF	AJ,PM,EH
	DF	AJ,PM,EH
<b>Documentations type:</b>	<b>Executed</b>	<b>Respons</b>
Plan	DF	AJ,PM,EH
<b>Necessary tools:</b>	<b>Executed.</b>	<b>Respons</b>
Revit	DF	AJ,PM,EH

<b>Comments from the project -logbook</b>	<b>Executed</b>	<b>Respons.</b>

## Data sheet for activity analysis

<b>Phase description:</b>	BPM
<b>Date when analysis is done:</b>	28.05.2014
<b>Participants initials for the in the analysis</b>	EH

<b>No</b>	<b>Activity name:</b>	<b>Reciever.</b>	CLIENT
30	Static report	<b>Duration</b>	20h
		<b>Act. work</b>	19h

### Illustration of the expected objective with activity.



### Purpose with this activity:

<b>Documents conten/Notes:</b>	<b>Executed</b>	<b>Respons</b>
Load calculatios	EH	AJ,DF,PM
Calculations of beams and columns	EH	AJ,DF,PM
Drawings	EH	AJ,DF,PM
Floor plans	EH	AJ,DF,PM
Soil tests	H	AJ,DF,PM
<b>Documentations type:</b>	<b>Executed</b>	<b>Respons</b>
	EH	AJ,DF,PM
<b>Necessary tools:</b>	<b>Executed.</b>	<b>Respons</b>
	EH	AJ,DF,PM

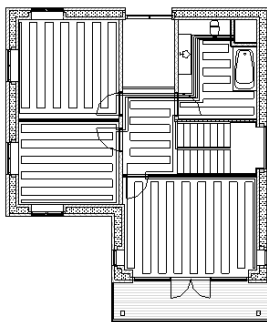
<b>Comments from the project -logbook</b>	<b>Executed</b>	<b>Respons.</b>

## Data sheet for activity analysis

<b>Phase description:</b>	BPM
<b>Date when analysis is done:</b>	01.06.2014
<b>Participants initials for the in the analysis</b>	EH

<b>No</b>	<b>Activity name:</b>	<b>Reciever.</b>	CLIENT
31	Technical Instalations	<b>Duration</b>	2 h
		<b>Act. work</b>	1h

### Illustration of the expected objective with activity.



### Purpose with this activity:

We are doing this to show the instalations in ur house. How the ventilation goes,where is the socket, where the piper are going. That also show if the instalations i good, because we can ee on this drawing if there is some window or mayby a door where we can not do the instalations. That is also for a client to show him and give some knowledge about his house.

<b>Documents conten/Notes:</b>	<b>Executed</b>	<b>Respons</b>
Knowledge	EH	AJ,DF,PM
Floor plans	EH	AJ,DF,PM
<b>Documentations type:</b>	<b>Executed</b>	<b>Respons</b>
Drawings	EH	AJ,DF,PM
<b>Necessary tools:</b>	<b>Executed.</b>	<b>Respons</b>
Revit	EH	AJ,DF,PM

<b>Comments from the project -logbook</b>	<b>Executed</b>	<b>Respons.</b>

## Data sheet for activity analysis

<b>Phase description:</b>	BPM
<b>Date when analysis is done:</b>	08.06.2014
<b>Participants initials for the in the analysis</b>	AJ

<b>No</b>	<b>Activity name:</b>	<b>Reciever.</b>	CLIENT
32	Building Component Journal	<b>Duration</b>	30h
		<b>Act. work</b>	35h

**Illustration of the expected objective with activity.**

**Purpose with this activity:**

We are doing this to get more knowledge about the construction of the house. After finish this BCJ we will know what kind of materials are in our house, where it is exactly, how to mounted together... It is the another type of learning the different parts of the house- by doing the analysis of the house. We are also showing from where we have our materials- what kind of producers we will used.

<b>Documents conten/Notes:</b>	<b>Executed</b>	<b>Respons</b>
BR 10	AJ	DF, PM, EH
Codes	AJ	DF, PM, EH
Knowledge	AJ	DF, PM, EH
Materials	AJ	DF, PM, EH
Producers		
<b>Documentations type:</b>	<b>Executed</b>	<b>Respons</b>
Analysis	AJ	DF, PM, EH
<b>Necessary tools:</b>	<b>Executed.</b>	<b>Respons</b>
Excel, word	AJ	DF, PM, EH

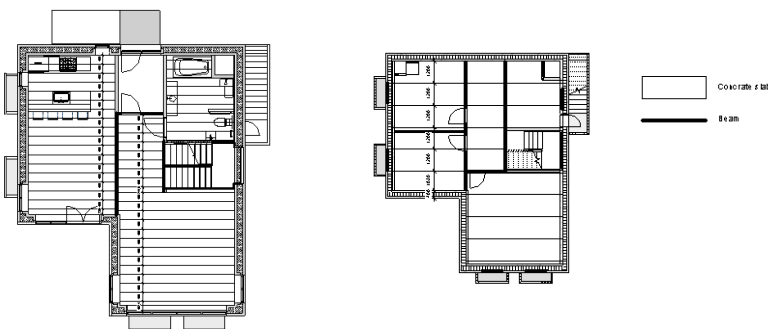
<b>Comments from the project -logbook</b>	<b>Executed</b>	<b>Respons.</b>

## Data sheet for activity analysis

<b>Phase description:</b>	BPM
<b>Date when analysis is done:</b>	
<b>Participants initials for the in the analysis</b>	AJ,DF,EH

<b>No</b>	<b>Activity name:</b>	<b>Reciever.</b>	CLIENT
33	Revit	<b>Duration</b>	20h
		<b>Act. work</b>	75 h

### Illustration of the expected objective with activity.



### Purpose with this activity:

We transferred our sketches to Revit. This program help us to find any mistakes in our house. It looks really real, so we always can see if it is ok. It helps us to show house to client. In this programm we did almost everything: technical instalations, fire plans, drainage plan, concrete slab, posi joist and so on.

<b>Documents conten/Notes:</b>	<b>Executed</b>	<b>Respons</b>
Sketches	AJ,DF,EH	AJ,DF,PM,EH
Knowledge	AJ,DF,EH	AJ,DF,PM,EH
Building regulations	AJ,DF,EH	AJ,DF,PM,EH
<b>Documentations type:</b>	<b>Executed</b>	<b>Respons</b>
Drawing	AJ,DF,EH	AJ,DF,PM,EH
<b>Necessary tools:</b>	<b>Executed.</b>	<b>Respons</b>
Revit	AJ,DF,EH	AJ,DF,PM,EH

<b>Comments from the project -logbook</b>	<b>Executed</b>	<b>Respons.</b>

## Data sheet for activity analysis

<b>Phase description:</b>	BPM
<b>Date when analysis is done:</b>	
<b>Participants initials for the in the analysis</b>	AJ,DF,PM,EH

<b>No</b>	<b>Activity name:</b>	<b>Reciever.</b>	CLIENT
34	Detail in revit	<b>Duration</b>	40 h
		<b>Act. work</b>	

**Illustration of the expected objective with activity.**

**Purpose with this activity:**

We are doing detil drawings to show the connetcion between parts of the house. That help us to understand the construction of our house and help to see if we have some problem. That give us more knowledge about the size of the materials and regulations.Detail in revit gave us alos more knowledge about revit.

<b>Documents conten/Notes:</b>	<b>Executed</b>	<b>Respons</b>
Finished house	AJ,DF,PM,EH	AJ,DF,PM,EH
Knowledge	AJ,DF,PM,EH	AJ,DF,PM,EH
Building Regulations	AJ,DF,PM,EH	AJ,DF,PM,EH
Books	AJ,DF,PM,EH	AJ,DF,PM,EH
<b>Documentations type:</b>	<b>Executed</b>	<b>Respons</b>
Drawing	AJ,DF,PM,EH	AJ,DF,PM,EH
<b>Necessary tools:</b>	<b>Executed.</b>	<b>Respons</b>
Revit	AJ,DF,PM,EH	AJ,DF,PM,EH

<b>Comments from the project -logbook</b>	<b>Executed</b>	<b>Respons.</b>

## Data sheet for activity analysis

<b>Phase description:</b>	BPM
<b>Date when analysis is done:</b>	06.06.2014
<b>Participants initials for the in the analysis</b>	PM

<b>No</b>	<b>Activity name:</b>	<b>Reciever.</b>	<b>CLIENT</b>
35	Price estimation	<b>Duration</b>	3h
		<b>Act. work</b>	7h

### Illustration of the expected objective with activity.

Summary 27. novem 2014

Num	DBK kode niveau 2	Text	Unit	Unit SP	Sales Price
		Electrical installations		127.425,40	127.425,40
		Inventory			
		Fix furniture		129.932,50	129.932,50
		Other componen parts			
		Building Site		0,00	0,00
		baloney		8.040,45	8.040,45
					2.588.064,00
<b>Supplements:</b>					
		Clients mandatory insurance			10.000,00
		Land Registration			5.000,00
		Fee 12% of total construction sum			470.580,00
		Unexpacted sundries 10 % of total const. sum			392.150,00
		Stemmanagement 2% of total const. sum			29.430,00
		<b>Total amount</b>			<b>5.269.814,00</b>
		<b>VAT (25%)</b>			<b>1.317.454,00</b>
		<b>Total amount incl. VAT</b>			<b>6.587.270,00</b>

VERSION: 1807 FOR COMMERCIAL USE

### Purpose with this activity:

We are doing price estimation to calculate the whole costs of building the house.

<b>Documents conten/Notes:</b>	<b>Executed</b>	<b>Respons</b>
Materials	PM	AJ,DF,EH
Parts of the house	PM	AJ,DF,EH
Knowledge	PM	AJ,DF,EH
<b>Documentations type:</b>	<b>Executed</b>	<b>Respons</b>
Calculation	PM	AJ,DF,EH
<b>Necessary tools:</b>	<b>Executed.</b>	<b>Respons</b>
Sigma	PM	AJ,DF,EH

<b>Comments from the project -logbook</b>	<b>Executed</b>	<b>Respons.</b>



## Data sheet for activity analysis

<b>Phase description:</b>	BPM
<b>Date when analysis is done:</b>	16.06.2014
<b>Participants initials for the in the analysis</b>	AJ,DF,PM,EH

<b>No</b>	<b>Activity name:</b>	<b>Reciever.</b>	GROUP MEMBERS
36	Quality assurance	<b>Duration</b>	1h
		<b>Act. work</b>	h

**Illustration of the expected objective with activity.**

**Purpose with this activity:**

We did this to check the project of other group. The group from B class checked our project and wrote what is wrong, what we should change and so on. It helps us to see mistakes in our project.

<b>Documents conten/Notes:</b>	<b>Executed</b>	<b>Respons</b>
All of our materials	AJ,DF,PM,EH	AJ,DF,PM,EH
<b>Documentations type:</b>	<b>Executed</b>	<b>Respons</b>
Analysis	AJ,DF,PM,EH	AJ,DF,PM,EH
<b>Necessary tools:</b>	<b>Executed.</b>	<b>Respons</b>
Paper,stempel	AJ,DF,PM,EH	AJ,DF,PM,EH

<b>Comments from the project -logbook</b>	<b>Executed</b>	<b>Respons.</b>

## Data sheet for activity analysis

<b>Phase description:</b>	BPM
<b>Date when analysis is done:</b>	20.06.2014
<b>Participants initials for the in the analysis</b>	AJ,DF,PM,EH

<b>No</b>	<b>Activity name:</b>	<b>Reciever.</b>	CLIENT
37	Presentation	<b>Duration</b>	2h
		<b>Act. work</b>	1h

**Illustration of the expected objective with activity.**

**Purpose with this activity:**

We are doing this presentation to show all of materials which we did during the whole project. We will present it to our client.

<b>Documents conten/Notes:</b>	<b>Executed</b>	<b>Respons</b>
Drawings	AJ,DF,PM,EH	AJ,DF,PM,EH
Documentations	AJ,DF,PM,EH	AJ,DF,PM,EH
Calculations	AJ,DF,PM,EH	AJ,DF,PM,EH
Revit	AJ,DF,PM,EH	AJ,DF,PM,EH
Price estimation	AJ,DF,PM,EH	AJ,DF,PM,EH
<b>Documentations type:</b>	<b>Executed</b>	<b>Respons</b>
Presentation	AJ,DF,PM,EH	AJ,DF,PM,EH
<b>Necessary tools:</b>	<b>Executed.</b>	<b>Respons</b>
Power Point	AJ,DF,PM,EH	AJ,DF,PM,EH

<b>Comments from the project -logbook</b>	<b>Executed</b>	<b>Respons.</b>